

# Planning - Oxford City Planning Committee

On **Tuesday 20 January 2026** At **6.00 pm**

www.oxford.gov.uk



## Presentations

### Contents

**Note: Planning Committee presentations contain mostly pictures, maps and plans. These are not in an accessible format.**

To see full details of the application including full plans, representations, public comments and supplementary information, please [click here](#) and enter the relevant Planning Reference number in the search box

4.	<b>25/02277/FUL 145 Howard Street, Oxford, Oxfordshire, OX4 3AZ</b>	3 - 22
----	---	--------

The agenda, reports and any additional supplements can be found together with this supplement on the committee meeting webpage.

*View or subscribe to updates for agendas, reports and minutes at [mycouncil.oxford.gov.uk](https://mycouncil.oxford.gov.uk).  
All public papers are available from the calendar link to this meeting once published  
Oxford City Council, Town Hall, St Aldate's Oxford OX1 1BX*

This page is intentionally left blank

# Oxford City Planning Committee Presentation

[www.oxford.gov.uk](http://www.oxford.gov.uk)



**Reference Number: 25/02277/FUL**

3

**Site Address: 145 Howard Street**



# Site Location Plan





[www.oxford.gov.uk](http://www.oxford.gov.uk)







[www.oxford.gov.uk](http://www.oxford.gov.uk)





[www.oxford.gov.uk](http://www.oxford.gov.uk)







[www.oxford.gov.uk](http://www.oxford.gov.uk)







[www.oxford.gov.uk](http://www.oxford.gov.uk)



10



[www.oxford.gov.uk](http://www.oxford.gov.uk)







41

[www.oxford.gov.uk](http://www.oxford.gov.uk)







12

[www.oxford.gov.uk](http://www.oxford.gov.uk)



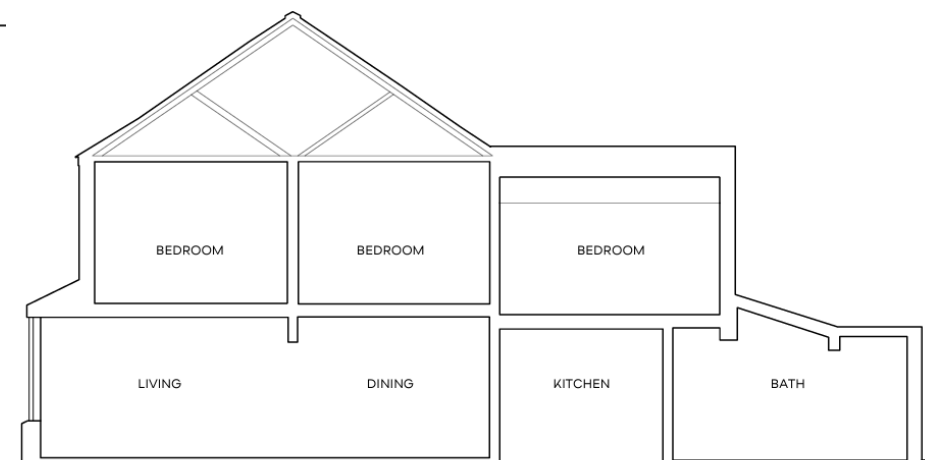
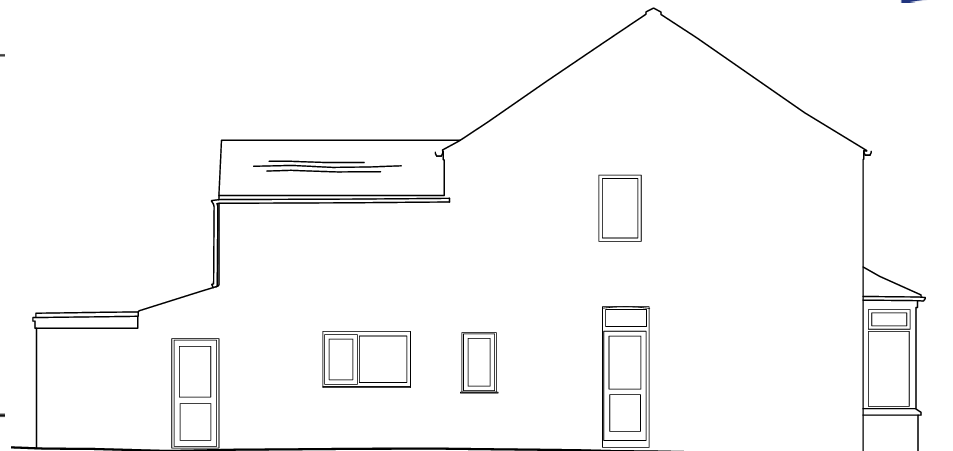


[www.oxford.gov.uk](http://www.oxford.gov.uk)



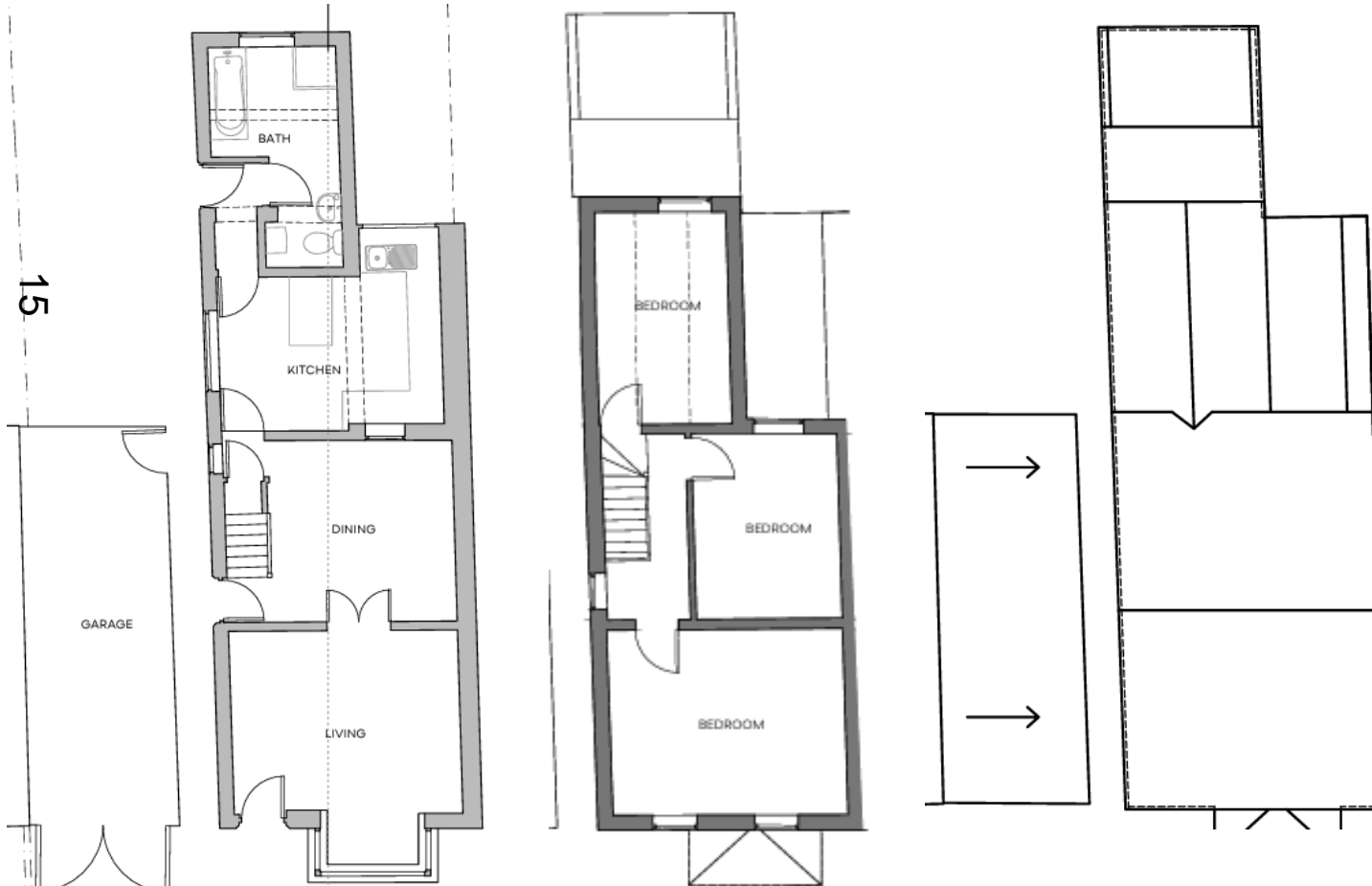
# Existing Elevations and Section

v.oxford.gov.uk



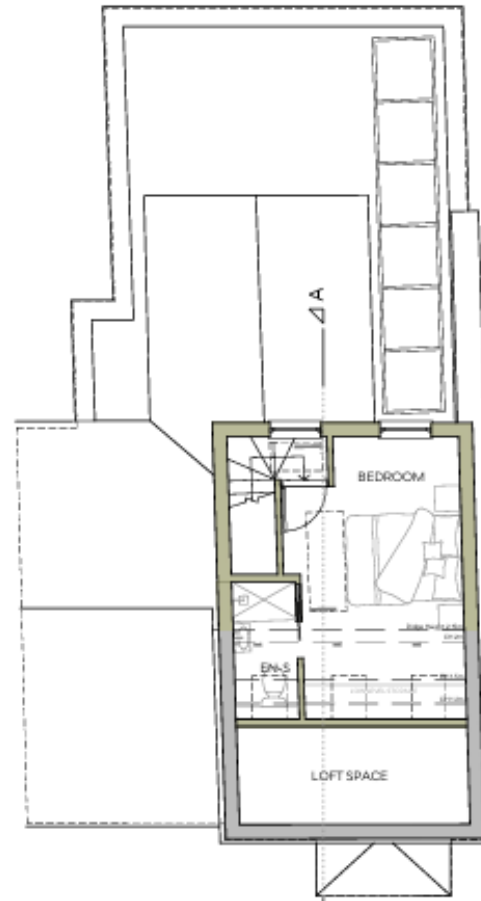
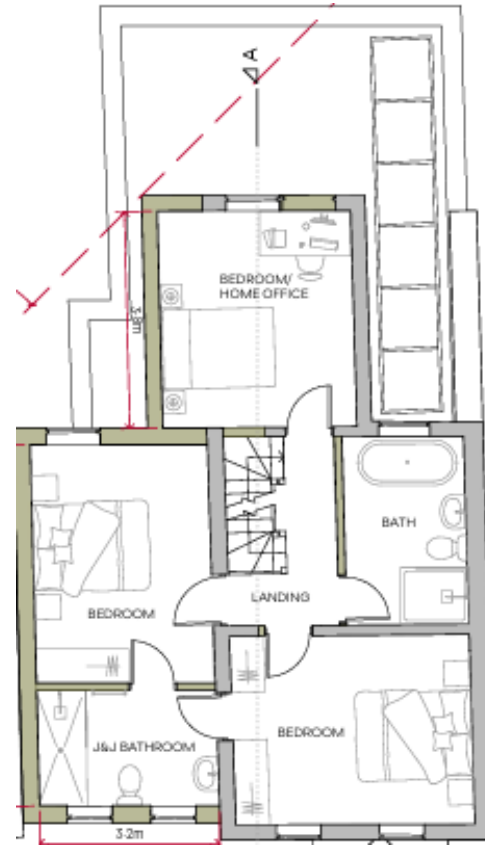
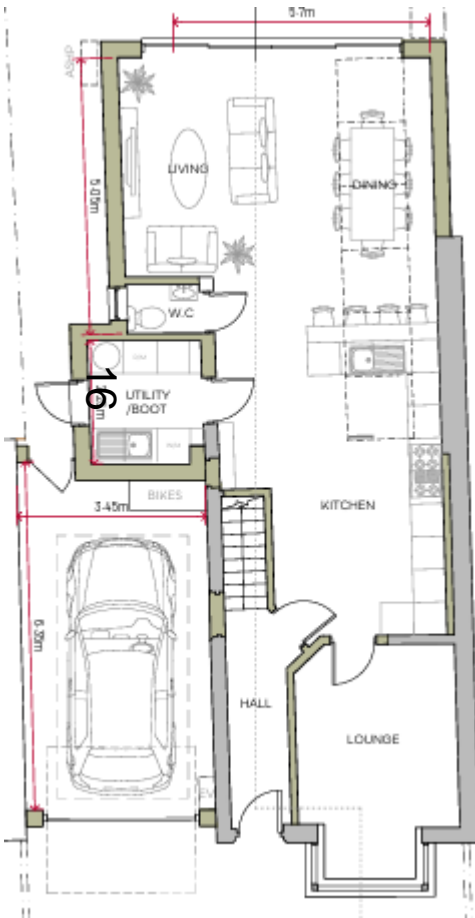


# Existing Floor and Roof Plans



# Plans approved under 24/01356/FUL

[www.oxford.gov.uk](http://www.oxford.gov.uk)



# Elevations approved under 24/01356/FUL



[www.oxford.gov.uk](http://www.oxford.gov.uk)





# Block Plan

18



[www.oxford.gov.uk](http://www.oxford.gov.uk)



# Proposed Front and Rear Elevations

[www.oxford.gov.uk](http://www.oxford.gov.uk)



# Proposed Side Elevation and Section





# Proposed Floor and Roof Plans

[www.oxford.gov.uk](http://www.oxford.gov.uk)



This page is intentionally left blank